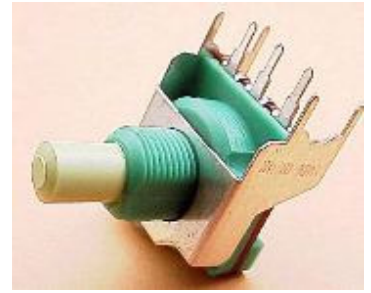




Entsprechend RoHS  
(EG2002/95/EC)



**ALPHASTAT 16 BR16ECO**

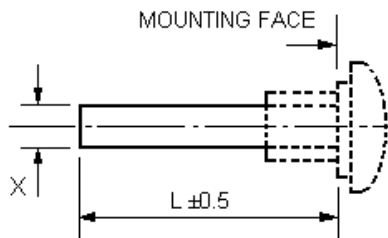
Ausführung / construction: ISO

Welle / shaft:  $\varnothing$  4 mm, L = 30 mm  
 $\varnothing$  6 mm, L = 35 mm

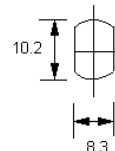
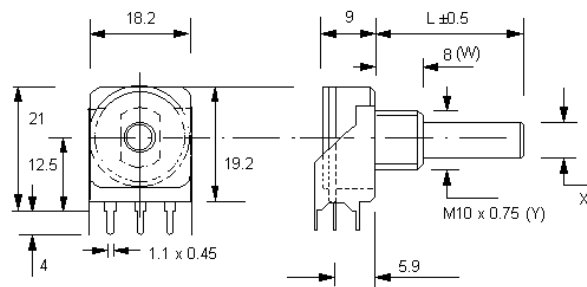
Buchse / bushing: M10 x 0,75

Drehbereich / rotation angle: 300°

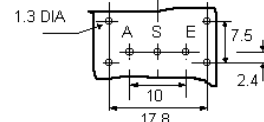
Printausführung / for printed circuits (PC)  
Conductive Plastic



Type	Desc. (X)	L (mm)
F21	$\varnothing$ 4 mm	14 - 35
F1	$\varnothing$ 6 mm	14 - 65



Bush mounting panel cut out.



Viewed on component side

	4 mm Welle F21-PC			6 mm Welle F1-PC			4 mm Welle F21-OW			6 mm Welle F1-OW		
	lin.	poslog	neglog	lin.	poslog	neglog	lin.	poslog	neglog	lin.	poslog	neglog
100 R												
220 R												
470 R												
1 k	7552			7632								
2,2 k	7553			7633								
4,7 k	7554	7562		7634	7647							
10 k	7555	7563		7635	7648							
22 k	7556	7564		7636	7649							
47 k	7557	7565		7637	7650							
100 k	7558	7566		7638	7651							
220 k	7559	7567		7639	7652							
470 k	7560	7568		7640	7653							
1 M	7561			7641								
2,2 M												
4,7 M												

\* lagermäßige Ausführungen \\ \* in stock